



International Library Information Knowledge



LIBRARY EXPANDING

Obtain knowledge in the Library

WeiXue lecture, innovation space, warmly services...

IT INTEGRATING

Login INTL Campus with INTL ID

email, eduroam, office365, PeopleSoft, Blackboard, myZJU...

CONTENTS

▶ **LIBRARY EXPANDING** page1
WeiXue lecture, innovation space, warmly services...

▶ **Library Review 2018** page10

▶ **IT INTEGRATING** page11
email, eduroam, office365, PeopleSoft, Blackboard, myZJU...

▶ **iLINK Data** page14

▶ **Our Freshers** page16

Editor-in-Chief: Xiaoqiang Jiang

Executive Editor: Luqi Wang

Deputy Editor:

Guogang Chen, Zixian Wu,
Xiaolin Wu, Yunzhe Gu,
Linpei Yang, Kowshik A Dey,
Qi Chen, Haocheng Yin
Shuna Xu,
Zhaozhao Shao,
Zhuowei Li,

Photos:

Mengjiao Zhong, Yiqi Feng
Fan Yang,

If you require this publication in an alternative format, please contact IT Service on 0571-87572669 or email ilinkmagazine@intl.zju.edu.cn



Editorial

Greetings from International Campus, Zhejiang University and welcome to the latest issue of iLINK!

Our International Campus provides an environment that enables and empowers its members to *learn and succeed globally*. Learning occurs when *data* are processed into *information*, internalized into *knowledge*, transformed into *wisdom* for effective use, and utilized as insights to guide *actions*. Learning is a most enlightening and delightful life-enriching experience. One of the most valuable learning resources on our Campus is the Library & Information Center (LIC).

The LIC has a clear vision to be a forward looking information service team that actively contributes to the advancement of our Campus' goals of becoming a first-rate international higher education institution in China. The excitement and complexity of international partnerships and climate in education, research, service, and technology transfer activities on our Campus have brought unique challenges in satisfying the users' information service needs. The LIC has been proactively in implementing creative initiatives and conducting continuous improvement processes with impressive outcomes. Effective communication has been one of LIC's strategic focus areas. iLINK magazine is one of its internal and external communication media.

iLINK is, very appropriately, the acronym for international Library & INformation Knowledge. It highlights and showcases, in the best way possible, LIC's multifaceted endeavors in sustaining and enhancing our Campus as a highly effective international learning organization. Our hope is for iLINK to serve as a vehicle of two-way communications. We invite you to enjoy reading iLINK. We would also like to hear from you. We very much look forward to staying connected with all of you.

K.C. Ting
Vice Dean of International Campus, ZJU

SUBMISSION DETAILS

If you would like to submit an article, or tell us about some news, please email ilinkmagazine@intl.zju.edu.cn

To keep up to date with LIC news:
<http://its.intl.zju.edu.cn>
<http://lib.intl.zju.edu.cn>

LIBRARY EXPANDING

-Obtain knowledge in the Library

Over 50,000 printed books are now available in campus library. Readers can also get 6.3 million books, 2.5 million e-books and 146,000 e-journals from the Zhejiang University Libraries. Furthermore, library's knowledge service is still expanding...



唯学讲堂 Weixue Lecture

Immerse in ZJU fascinating lectures

"Only the learning is endless, broaden to the edge of world". The Multi-Function Room of the Campus Library is a place where you can often hear fascinating academic reports and lectures. The "Weixue Lecture" connects this space with the entire academic lecture space of Zhejiang University, and spans the distance and time. WeiXue Lectures gather various of high-quality academic lectures held by Zhejiang University, including Oriental Forum of Zhejiang University, Global Lectures Series, Zijin Zhetan, Xueheng Humanities Lecture and so on.

In Weixue Lecture, LIC carefully selects famous experts in different academic fields, including Nobel Prize winners, scientific masters and literary masters. The weekly lecture information will be released on the event page of the campus website. If you have any academic lectures that want to see in Zhejiang university, you can also contact us.



Enjoy the freedom to explore massive titles – Kindle Unlimited

The library is devoting to improve the range of e-resources provided to students. Based on mobile reading devices renting service, we provide you with 120 thousand e-books for free as Kindle Unlimited is default activated on kindle you can rent from library. iPads are available for renting as well.

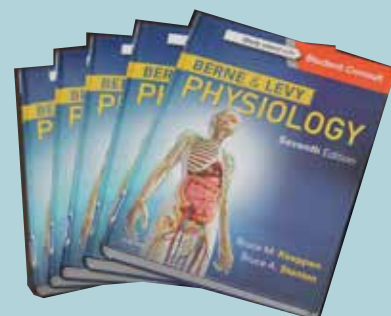
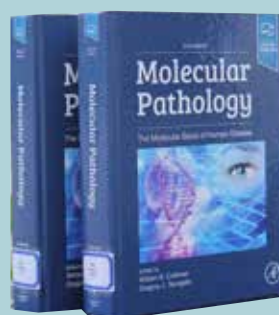


Expand academic resources



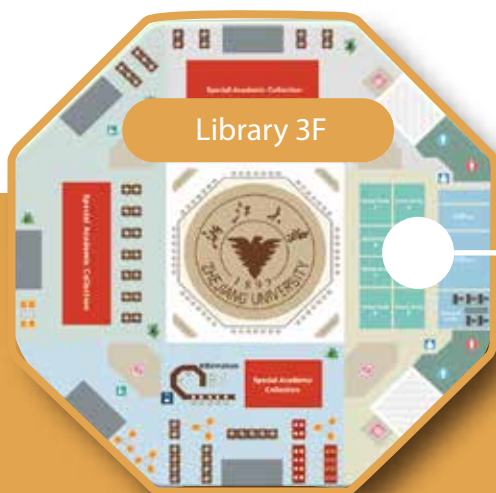
Learning Support – Textbook shelves

Items on Textbooks shelves are all published by world famous academic presses, including **Cengage**, **Pearson**, **McGraw-Hill Education** etc., which are widely used by global higher academic institutions. For the convenience of instructors and students to obtain textbooks, shelves have been set up on the first floor of the library. Books are mainly for the undergraduate courses in our campus, including biomedical science, engineering, English and other disciplines. Textbook shelves will be continuously updated.



Expand innovative knowledge space

To better meet the needs for group study and supply supporting for communication, in 2018, the library opened all areas of the second floor and parts of the third floor. "Innovative space" is an important part of library.



Better place for brainstorming – group study room

There are various types of rooms in library.

For **group studies**, new digital technologies bring an efficient discussion experience, a full set of IT devices allows users to use multiple devices to project specific resources on separate screens in group study rooms.

For **workshops or trainings**, there are several rooms equipped with remote video devices and touchable e-blackboard, which enable users to carry out a small activity easily.

For **official conferences and cultural events**, multi-function room on the library first floor allows to project slides or videos with wide range based on a large screen projection plus two high definitions LED screens.



Expand innovative knowledge space



Excellent computer facility - iMac & Surface studio

On second and third floor, iMac and Surface Studio are all available for everyone to use.

What students said:

"The stunning screen, the advanced interactive accessories such as electromagnetic pens, and the mode of use called " Studio " with novel 20-degree make the Surface Studio the most advanced all-in-one machine at present, which can help international campus students significantly improve their study and work efficiency in the library."



Seamless connection to teaching building

Library corridor on the second floor builds an organic connection between class-learning and self-learning, it is designed for students to visit the library more convenient after the class. Students can have a brief discussion as it is not a silent zone. Moreover, a variety of exhibitions will be held in this area.



Exhibitions Space

Complete Song Dynasty Painting Edition

"Chinese Ancient Paintings" are book series published by Zhejiang University Press. It has completed 23 books of the "Complete Song Dynasty Edition" and 16 volumes of the "Complete Yuan Dynasty Edition". It has been widely praised by experts and scholars at home and abroad. The compilation of more than 110 volumes are under intense progress.

At present, our library has collected 6 sets, 23 volumes of works of Complete Song Dynasty Painting Edition, which are displayed in the atrium on the first floor of the library.



More exhibitions on library

- Exhibition of Ancient Chinese Paintings HD Photos
- Exhibition of Plant Specimen
- "WeiXue Fair"—Philosophy Exhibition
- Keeping the Past to Inspire the Future- Exhibition on Chinese Traditional Door God, Calligraphy and Paintings

Expand warmly service

In the library, you can experience not only the gorgeous interior space, the large amount of book resources, and the enthusiastic service of the librarians. In addition, the library uses a variety of forms to transfer the choice of book resource construction to teachers and students, including book selecting specialist, Weixue bookshelf, Yunyue reading, Chinese and English book fairs, etc..

Book selecting specialist

We kindly invite you to help us to build a more professional collection and better meet the needs of readers, with your specialized academic background. Whether your major is Biomedicine, Engineering, China Studies, or Math, Chemistry, Physics, Philosophy, and Business, we are waiting for you!



Weixue Shelf

A great deal of best-selling books are displayed on Weixue Shelf, which will be regularly updated. The books are allowed to borrow or purchase by teachers and students. Besides that, the books with the borrowing records will be added into library purchase lists.

Yunyue Reading

'Yunyue Reading' online recommendation service simplify the borrowing process of Chinese books. It is a new book delivery service platform launched by Zhejiang University Library. During the April 23rd -25th, library brings this online service to library on site, more than 3,000 chinese books are available to be directly taken by teachers and students on Chinese Book Fair.



Library student assistants

- Kowshik A Dey 2018 Computer Engineering student

It was a bright sunny day when I first saw the famous hexagonal building of our university. Curiosity forced me to take a peek into the building. When I came close to the building, bold letters in front of it became more clearer - "Zhejiang University International Campus Library". As soon as I entered the building a whole new atmosphere materialized in front of me and the smell of books and coffee tingled my senses. At that moment I took a picture of mine in the centre of the library.

Being the only international library assistant was challenging, I never expected to survive in a Chinese majority environment. But, however with the help of the supervisors I learned the basic duty of a library assistant, without their help it would have been impossible. Currently, according to my regular routine I work every Saturday evening from 5:30 to 10:30.

Every time I help a student it gives me a good feeling. So, in my opinion I am privileged to be given such a responsibility and I would certainly try to put more effort to match the growing number of readers in the library.



- Yin Haocheng 2017 Electrical Engineering student

This year, I feel so happy to be elected as the chair of the library student assistant committee. As for me, working as a library student assistant is a wonderful experience and it also requires me to be more hardworking and energetic. In the library student assistant committee, every student assistant will be on duty weekly. The main daily jobs for us include shelving the returned books to the correct order, checking the correctness of books' order for all shelves, ect.. Although there are many jobs to do, I think they never fail to fascinate me because I know I am taking my responsibility to create a good learning atmosphere for all students and teachers.

Every time when I go to the library in the morning, the place will communicate a sense of order and neatness for me. I think this is the best feeling we create for all readers and also the best gift for ourselves.

Moreover, working as a library student assistant greatly improved our management for ourselves and enhanced our patience to do everything. After being the chair of the library student assistant committee, now I need to do more things. Instead of feeling busy, I feel the extra jobs enrich my spare time and I really enjoy devoting more efforts into the library.



Expand warmly service

Empower your skills

- Trainings for new students and staffs, help freshers to better understand the information about campus IT & library services.
- Trainings for specific group, like Bb trainings for academic management group.
- Trainings for all campus members by Library Literacy Training.

Library trainings in classes - taking a close look at library resources, using databases to obtain online academic information, how to use library resources to write an essay, etc.



Library resources introduce to China studies students



Foreign students orientation 2018

LIC literacy trainings - using search engines to obtain online academic information, an introduction to reference management, work with Office 365 series, etc.



BlackBoard trainings for faculties



'Play with office365'series training including OneDrive, OneNote and Outlook



Academic reference management training

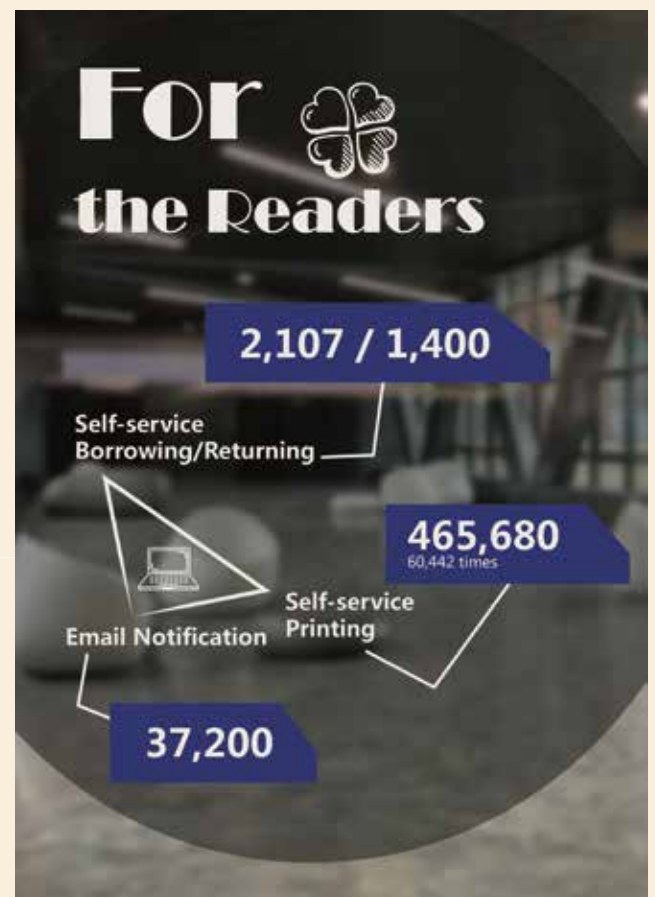


Library Review 2018

For the Reader With the Reader

2018 had quietly passed. Before you know it, we have stepped into 2019. Let's take advantage of the remaining warmth of 2018 to record those wonderful moments of you and your library that you don't know about.

This year, all of you used self-serviced equipments very well! When borrowing books, don't forget to scan the long barcode at the back of book.



In the past year, library received 589 book recommendations from readers and completed 2600 times of consulting from readers.

IT INTEGRATING by

INTL ID - a key to unlock your campus life.

INTL ID is administered by Library&Information Center as a way of identity authentication. You will use INTL ID as your username access many computing resources in international campus, main campus and other global institutions.

Office365

eduroam

Blackboard

PeopleSoft

SSLVPN

myZJU

INTL ID is your email account

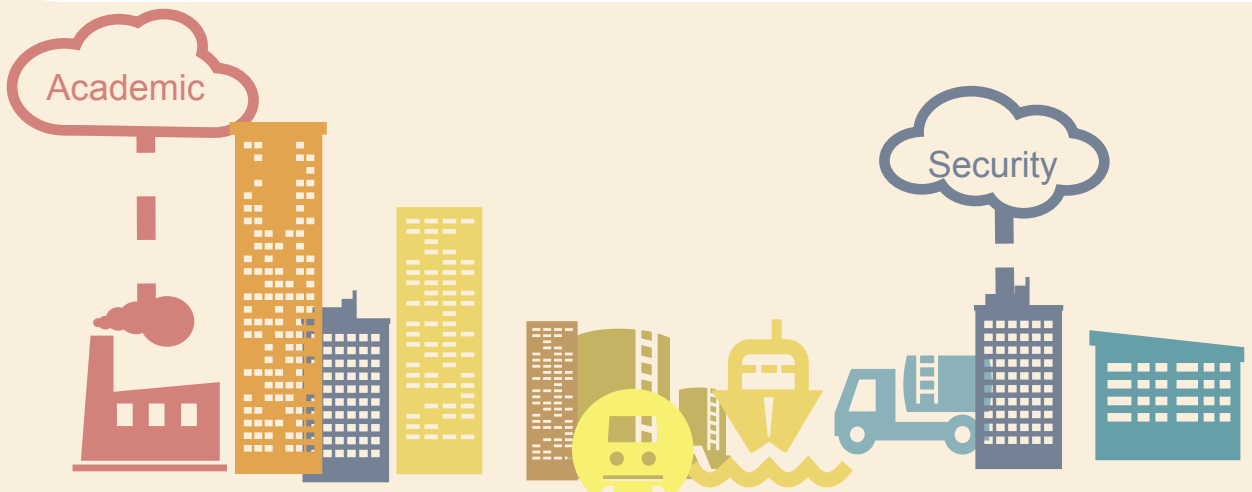
INTL ID is an email address containing user's name, ie. sanzhang.19@intl.zju.edu.cn, thus you could easily use INTL ID as your campus email. It could be more convenient to use Outlook client to manage your mail and calendar. Since everyone in international campus has INTL ID, you could easily find your classmates, professors, colleagues in Outlook - contact.

INTL ID is your Network account

Use INTL ID to access wired and wireless network around the campus, including "eduroam" - a worldwide roaming for research and education and "ZJUWLAN" - the unified SSID of ZJU. When you are off-campus, you could use INTL ID access campus network through SSLVPN service.

Academic

Security





Self-printing

ZJUWLAN

email

Z Share

Roaming the world with eduroam

International Campus is committed to building an international network information environment, supporting international academic exchanges and cooperation.

In terms of network infrastructure, the international campus not only provides full coverage of eduroam wireless network, but also enables teachers and students to use the INTL ID to access the Internet freely in universities in more than 90 countries and regions, and also use it in public areas of Haining.

International Campus built Haining city as the first city in China covered by eduroam. "eduroam City-Haining" project extends eduroam coverage to Haining main public places including Haining West Station, Haining Station, Haining Transport Center, Haining Administration Service Center, Exit-Entry Administration, Haining Gymnasium etc.

myZJU

Students and teachers could use INTL ID login to their portal page - myZJU. myZJU gather all information you need like the recent announcement, notice, updated campus regulation and quick link pointing to various daily service applications such as academic calendar, shuttle bus, venue booking, and so on.

International

Mobility

Free



Use INTL ID to collaborate with Office365

Office365 provides a more productive, mobile friendly work experience to students, faculty and staff. Online Office 2016, 5 TB OneDrive storage, efficient e notebook and so on. These are the tools that make businesses run efficiently.

International Campus is one of Microsoft Customer Success Story as we deeply use the Office365 and personalize the functions to meet high educational demands. Also we enjoy a hands-on relationship with Microsoft engineering team to help us build such a powerful cloud platform



Office365 - Power BI

Power BI is a suite of Business Analytics tools shipped with Office365 to analyze data and share insights. It is a good and efficient way for you to get rid of complicated excel files. It brings the power of data analysis and visualization to every user on campus.



Office365 - OneDrive

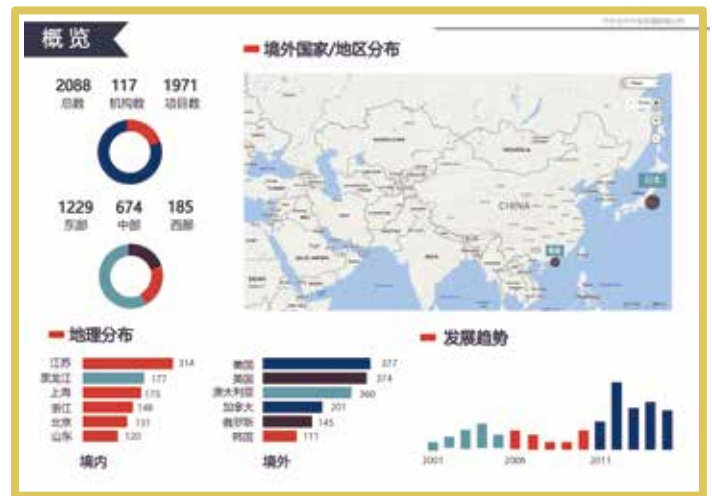
OneDrive, as a cloud storage service in Office Family, can synchronize on multiple devices. Whether it is a personal computer, laptop, ipad or public computer in the library, files can be synchronized.

iLINK DATA

- Turn Data into Insights

By using "Crawler", LIC data analysis group grabs Sino-foreign cooperative education data from the Ministry of Education Website. Data shows some general rules including regional distribution, major setup, education level etc.. All these informations are visualized by power BI. Detailed analysis of C9 League of China is also included.

Visit <http://ilinkdata.intl.zju.edu.cn/> to read more about this.



iLINK WeChat

iLINK WeChat is published on March 8th. By following it, you can get the latest news of the library and IT information, including event notice, new service introduction, and skill sharing tweets. It could be a good way to get close to LIC.

Book a kindle, iPad, or group study room via iLINK WeChat. After your application of booking, a library room was verified, you and invitees will automatically receive an email and synchronize with your outlook calendar.

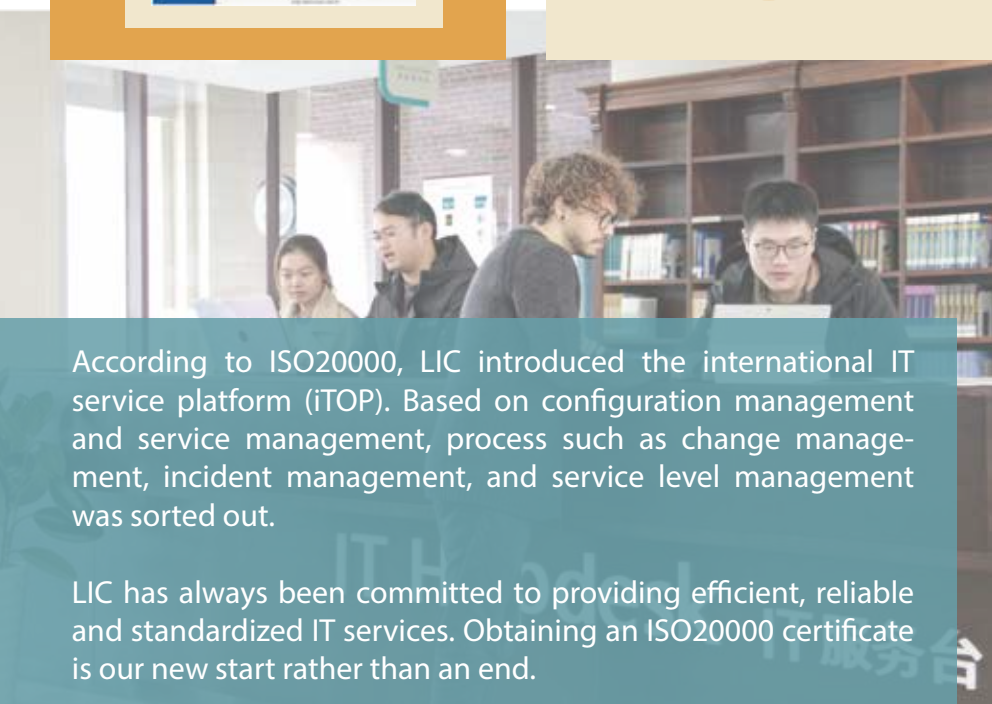
Get IT help from IT via iLINK WeChat. After your request is submitted, our IT support team will respond to it soon.

LIC is ISO20000 Certificated !

Library Information Center obtained the ISO/IEC20000 IT Service Management System Certificate (referred as ISO20000) in June 2019.

ISO20000 is the first internationally recognized IT service management standard. It is an important indicator of organization operations and service management level.

In the international campus, in addition to the IT software and hardware environment such as PeopleSoft, Office365, eduroam wireless network, the entire IT service management system is gradually moving toward international standards.



According to ISO20000, LIC introduced the international IT service platform (iTOP). Based on configuration management and service management, process such as change management, incident management, and service level management was sorted out.

LIC has always been committed to providing efficient, reliable and standardized IT services. Obtaining an ISO20000 certificate is our new start rather than an end.

Our Freshers

Gu Yunzhe



Code is my belief.

Yang Yue



To make each day count.

Zhong Mengjiao



carpe diem.

Xu Shuna



Be Kind, Be Nice, Be Friendly

Su Ting



Do business, but be not a slave to it.

Zhao Huifen



Better to light one candle than to curse the darkness.

Wang Luqi



Effort is for success, try to be a kind of contentment.

Wu Zixian



Nothing is impossible for a willing heart.



iLINK MAGAZINE



INTERNATIONAL CAMPUS
ZHEJIANG UNIVERSITY
浙江大学国际联合学院



Library & Information Center
图书信息中心